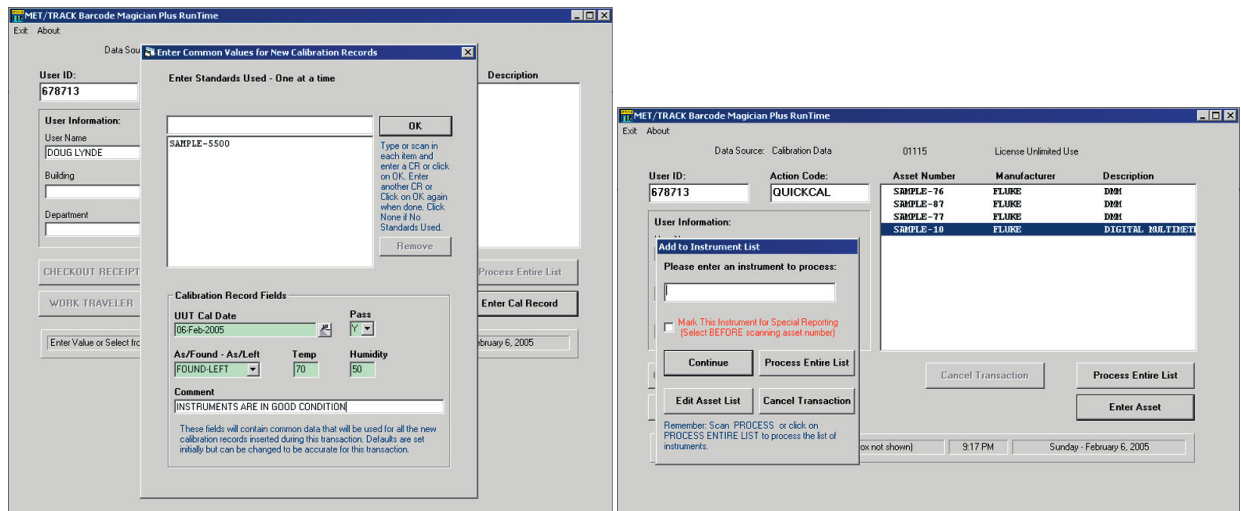


Barcode Magician® 1.6 Basic/Plus



New batch calibration: Entering standards used and processing instruments to be calibrated.

Added capabilities, new functionality

Barcode Magician 1.6 Basic (BCM Basic) and Barcode Magician 1.6 Plus (BCM Plus) with batch calibration were developed to assist you in reducing data entry errors and substantially increase productivity.

BCM Basic, which is similar to BCM 1.5, provides a simple, easy to use interface that allows your calibration technicians and instrument custodians a way to update their Fluke MET/CAL (version 7.x) database quickly and efficiently while at the same time drastically reducing data entry errors. BCM Basic works by making changes to instrument data within the Fluke MET/CAL database.

BCM Plus

Batch calibration is here!

One of the most requested functions has been batch calibration. Many labs calibrate several of the same type of instrument at the same time (e.g. thread gages). Or, the lab manager may want to enter calibration records for instruments that were calibrated by

an outside lab. This method will allow these instruments to be processed in a fraction of the time that it would normally take.

In the example above, we ran an action code called QUICKCAL. This example uses the new @STDSUSED variable (BCM Plus only). The left screen shows the required fields for standards, cal date, and environmental conditions that must be entered first. The right screen prompts the operator to enter the assets, as in previous versions.

This batch entry of BCM Plus can also be used to help satisfy FDA requirements when entering calibration records. BCM can be configured to request a log in and password before executing the action code(s) and the user information is stored in the calibration record.

BCM Plus adds capabilities and new functionality to Barcode Magician and gives you the flexibility of mixing and matching the Basic version and Plus version on the same system.

BCM Plus features

- Batch calibration allowing instruments to be processed in a fraction of the time
- Added pre-defined functions to insert the following:
 - New calibration record with options to include standards used and CAL results
 - New maintenance record
 - New location record
 - Comment field of your choice into any major table

The above functions are interactively entered per asset to allow processing different categories of instruments in the same transaction. You can process one asset at a time or a batch. The new record forms include all the unsuppressed fields and look and function very similar to MET/TRACK 7.x. Only the required fields need to be entered. Includes copy forwards, defaults, pick lists and calculated due date.

- Instruments can be added while executing an action code

- Action codes can be configured to allow/not allow new instruments
- Added new system variables for SQL statements
- Pick list on users profile (Basic and Plus)
- Manual entry of CAL results into the new results table
- Enhanced speed when operating on a WAN
- Custom phrase file allows the editing of labels and captions and phrases can also be translated into other languages
- New action code CLONE function in the Action Code Editor
- Regional localization for date and number formats

Real-time updates and enhanced system integrity

BCM Plus allows you to make real-time changes to your MET/CAL database for both small and large quantities of instruments, in a fast, consistent manner that allows even inexperienced users to increase productivity. The ease of data entry gained by using BCM allows users to

process more instrumentation faster, allows customers to make structured updates to the database, and frees you from making manual status and location updates for these instruments. With the simplification of data entry gained by using Barcode Magician, you easily add more traceability information to your MET/BASE system, without adding burden to your users.

BCM helps the busy lab manager maintain compliance with ISO9000 in case of an instrument failure by recording location information on individual instruments.

How the licensing works

With the two versions, we have two licensing programs. BCM Basic uses the existing Barcode Magician 1.5 licenses so you can download BCM Basic 1.6 and update an existing 1.5 system for free and re-register BCM Basic using the 1.5 licenses (all of your Barcode Magician stations must be updated to version 1.6).

With BCM Plus, which adds new functionality to Barcode Magician, you have the flexibility of mixing and

matching the Basic version and Plus version on the same system. The workstation configuration program must be configured for either the Basic or Plus version on each workstation. This is easy to do and all you need are the licenses.

Free demo

You can also request a Barcode Magician demo, but you must have MET/TRACK 7.x. If you decide you want to test Barcode Magician, contact us by e-mail or phone and we will supply you with a 30 day demo code and the system is fully-functional. You will either need to download the files from our download section, or we can send you a CD. You will be very surprised at the performance. You can also download and view the system manual in PDF format.

Updating existing Barcode Magician systems

For existing Barcode Magician systems, simply download the appropriate license registration report from the OTS website and fax it to On Time Support at (281) 465-9478.

ORDERING INFORMATION

PRODUCT	PART NUMBER
Barcode Magician 1.6 Basic (if ordering from OTS):	5032-v1.6
Barcode Magician 1.6 Basic upgrade from 1.4 and older: <i>(must have license report faxed to OTS)</i>	5033
BCM 1.6 Plus Part Number if ordering from OTS:	5034
BCM 1.6 Plus upgrade from any BCM versions: <i>(must have license report faxed to OTS)</i>	5035

NOTE:

For MET/CAL version 7.0x — use Barcode Magician version 1.6.0

For MET/CAL version 7.1x — use Barcode Magician version 1.6.1

Remember that all BCM stations must be upgraded to the same version; for example you can mix 1.6 Basic stations and 1.6 Plus stations on the same system.

For Pricing & Delivery Contact:
On Time Support Inc. or your Fluke representative.

ON TIME SUPPORT, INC.

25132 Oakhurst Drive, Suite 185
Spring, TX 77386
281.296.6066
Fax 281.465.9478
inquiries@ontimesupport.com
www.ontimesupport.com

© 2005 On Time Support, Inc. All Rights Reserved. Remote Pipeline, Process/Track, and Barcode Magician are registered trademarks of On Time Support. All other trademarks are owned by their respective companies.